



Professional



Introduction

Professional areas	4 - 5
--------------------	-------

Professional washers

Introduction to professional washers	6 - 11
Model range	12-15

Professional tumble dryers

Introduction to professional tumble dryers	16-19
Model range	20-23

Accessories

Washers, tumble dryers, drying cabinets	24-25
---	-------

Professional dishwashers

Introduction to professional dishwashers	26-33
Model range	34-37

Accessories

Dishwashers	38
-------------	----

Product information

Technical specifications	39-45
Installation drawings	46-49

Professional areas



Institutions & Offices

Professional products used in schools, retirement homes, pre-schools, offices and fire stations are employed many times a day and often by many different users. Our professional machines are therefore an ideal choice since they are robust, durable products that are extremely easy to use and understand. They also fulfil all necessary hygiene and antibacterial demands with both washer and dishwasher running at high temperatures.



Cleaning companies

Demands for hygiene and careful cleaning are constantly increasing. Efficient floor cleaning calls for proper washing of the cleaning utensils. It is important that the equipment used satisfies prevailing hygiene demands. With our professional washers you'll have ideal programs for cleaning mops and microfibre cleaning cloths.



Health care

When it comes to hospital laundry hygiene, there's no room for compromise. Providing clean towels or work clothes is an essential part of the health care being provided. Our washers have programs that fulfil hygiene demands. With their size in combination with a large capacity they are also easy to place in different settings. This gives you the flexibility to place a washer or dryer on each floor of a hospital or clinic.



Salons & Leisure

Hairdressers, salons & spas and sport & leisure facilities do a lot of laundry every day. Their laundry appliances must therefore be built to be used many times a day and for a long period of time. That is why our machines are a good investment. Compared to a domestic machine our professional products have higher quality, a longer life and a high heat output that gives efficient programs with shorter cycle times. They also give you flexibility with small exterior dimensions combined with a large internal capacity.



Marine & Offshore

Our marine washers and dryers (we have both 230 V/60Hz and 440 V/60Hz without 0 potential models) have been sold to the marine industry for several years. We know that the life of laundry equipment on passenger ships, freighters and oil rigs can be tough with heavily soiled laundry and an environment that leads to corrosion of machines and equipment. The laundry room is often a part of the living quarters, so low noise and minimum vibration are greatly appreciated. This is assured thanks to our stable washers and dryers with durable constructions and front feet fixations.



Hotels & Restaurants

For guests at hotel and restaurants spotless dishes are a must and therefore it is so important to have the right dishwasher. Particularly when there is a full complement of guests, delays are not acceptable and cleaning performance must be perfect. ASKO's professional dishwashers have short program times, a two basket system and variable pump speed that ensures optimal cleaning result. The water pressure can be controlled, making it possible to effectively clean tall beer glasses in one wash cycle and small delicate glasses in another.



Self-service laundries

Landlords, construction companies, universities and military bases have all realised the savings that can be made by providing tenants with a self-service laundry area instead of installing machines in each apartment. Launderettes are another kind of self-service laundry area. Self-service laundries call for durable machines that are easy to use and have quick yet efficient programs.



Camping & Marinas

In the summer time, everyone wants a free and easy life. Families leave their homes and pack the car and boat, and head out on holiday. However, they still require certain standards of service, often crucial when choosing a camp site, cabin village, youth hostel or guest harbour - they need to be able to wash and dry their laundry. Our professional machines are an ideal choice as they are built to be used many times a day, are user friendly and can be used by many different people.

Washers



Cost effective and flexible

Our professional washers are robust, reliable machines that are built to last longer – and they do. The 28 programme alternatives make our professional washer one of the most flexible on the market. You even have

the option to design your own wash program to perfectly match your type of laundry. They are cost effective with low running and maintenance outlay.



Communication interface

With the integrated communication interface you can connect to a time booking system, detergent dosage system and run service diagnostics. The interface also has an open protocol (MODBUS) allowing your partner to adapt their system to our appliance at minimal cost.

Number of cycles and failure codes are continuously logged and the log file is easy accessible by service technicians during maintenance. To meet any specific demands from our professional users the washer is also set up with an automatic dosage system for 6 chemicals.



Quattro™ construction

The outer drum rests on four strong supporting shock absorbers firmly attached to a steel bottom plate. The entire construction is located inside the machine and spinning at high spin speed can be done virtually free of vibrations.



Induction motor

Our professional washers are fitted with robust induction motors without carbon brushes that can cope with the highest spin speeds, reduces noise levels and also increases the service life of the machine.



Professional door system - easy loading and unloading

The door has a key position on a washing machine and with the right design it can make a big difference. Therefore, we have put a little extra energy into designing a unique door system that will make a great difference to your everyday life. The door opens 180° which makes it possible to set a laundry basket close to the machine and

thanks to the Smart Seal™ construction you don't have the traditional rubber bellow in the opening, which makes it easier to load and unload. Finally, with the smart door lock you re-use the energy from opening the door for closing it; you just have to give it a slight push in the right direction.



Integrated coin operation

Our professional washer can be equipped with an integrated coin operation system. The system is easily adapted to a wide range of currencies. It's available with two slots for both washer and dryer and one slot for the washer only. (Allow 12 weeks for delivery)



Different wattage for different needs

Depending on the soiling level and the daily amount of laundry you will need different power levels. Our professional washers come with either 7 kW, 4,4 kW or 3 kW. The 4,4 kW washer can easily be rewired down to 2,2 kW and 3 kW down to 2 kW.



28 flexible programs

You will for sure find a suitable programme among the 28 programmes that are available. Three of these can even be customised and adapted according to any specific laundry load, soiling and delicacy.



Active Drum™

Our unique Active Drum™ design in combination with the hour-glass-shaped lifters gives less wear on delicate items and better balance. The lifters also guide gravel to the larger evacuation holes in the lifter edges. Perfect for washing mops.



Stainless steel outer drum

The outer drum in an ASKO professional washer is made of durable stainless steel because it's tougher, has higher quality and allows you to wash at higher temperatures and spin at higher speed. Even the top and front plates are made of stainless steel.



Cast iron counter-weights

Most manufacturers stabilise their washing machines with concrete. We've chosen cast iron, which lasts longer and also enables a higher spin speed, making the spin cycle far more efficient.

28 program flexibility



Why not design your own washing program? Our professional washers give you more flexibility and program options than ever before. With our unique solutions we empower you to create the programs that meet your specific needs.

More flexibility than ever

You have 28 different programs to choose from. Three of these (nos. 26-28) can be customised according to your needs. This means a service technician can assist you in selecting the optimal settings for your own unique programs, e.g. pre-wash, wash time, temperature, number of rinses, spin speed etc. Our professional washers have one to ten programs active simultaneously (blocking/adjustment is possible via the user interface). It is also possible for service technicians to change the temperature and spin speed on all programs via the user interface.

Disinfection program

Our professional washers come with specialised disinfection programs which fulfil the strict standards of public health authorities. This is assured with a high power output and a system that ensures the chosen temperature is reached and maintained in order to guarantee disinfection. Our disinfection program has an efficient pre-wash which ensures that all proteins found in the laundry are dissolved and removed before the temperature is raised in the main wash. The machines can also wash at extremely high temperatures if required. The disinfection program fulfils RKI - Robert Koch Institute (The Public Health Institute for Germany) standards when using DGHM - Deutsche Gesellschaft für Hygiene und Mikrobiologie (German Society for Hygiene and Microbiology) approved detergents. Maximum temperature 40°, 60°, 90°C reached during the cycle is shown in the display (can be switched off if desired). These programs should be combined with specific detergent for proper disinfection.

- 90°C: Wash, main wash at 92°C + 10 min wash cycle (reheat if temp. < 91°C), rinse, spin, rinse, spin, rinse and final spin.

- 60°C: Wash, main wash at 65°C + 20 min wash cycle (reheat if temp. < 61°C), rinse, spin, rinse, spin, rinse and final spin. Combined with specific detergent for proper disinfection.

- 40°C: Wash, main wash at 45°C + 20 min wash cycle (reheat if temp. < 41°C), rinse, spin, rinse, spin, rinse and final spin. Combined with specific detergent for proper disinfection.

Mop program

With our specially developed mop program you'll take the best possible care of your cleaning mops. It has an efficient cold pre-wash to remove larger dirt and gravel before the main wash. This in combination with our unique Active Drum™ gives an optimal cleaning performance since the hourglass shaped lifters guide large "objects" such as gravel to the bigger evacuation holes in the lifter edges which effectively remove dirt from the machine. With two rinses using a high water level the program cleans your mops in the best possible way. By adjusting the time and spin speed you can choose how much residual moisture you want to leave in the mop.

- Mop 90°C (P14): Cold wash, main wash 90°C, high water level, rinse, spin cycle, rinse and final spin.
- Mop 60°C (P13): Cold wash, main wash 60°C, high water level, rinse, spin cycle, rinse and final spin.

Microfibre program

A unique program specially developed for microfibre fabrics such as microfibre cloths. The program has three rinses with a high water level in the first rinse for an optimal wash performance.

- Microfibre 60°C (P15).
- Microfibre 40°C (P16).

Asthma and allergy

Our washers are recommended by both the Swedish and Norwegian Asthma and Allergy Associations and meet their stringent criteria for allergy approval. Our asthma and allergy approved washers have six unique programs (P20-P25).

Special programs

Service staff will be able to create customised programs via the user interface (program 26-28).

- Pre-wash: Number (0-3)/ water level (normal/ high) / time (1-15 min)/ temperature (25°C-60°C).
- Main wash: Time (0-60 min)/water level (normal/high)/temperature (30°-92°C)/ re-heat (off/on).
- Intermediate spin prior to each rinse (on/off).
- Number of rinses (1-7)/ spin speed (0-1400)/ spin time (0-300 sec).

PROGRAM	MAX. LOAD	SPIN SPEED	WATER CONSUMPTION HOT / COLD	ENERGY CONSUMPTION	TIME	RINSES
P1 Normal 60°C*	8 kg	1400 rpm	-/80 litres	1.30 kWh	150 min	5
P2 Normal 40°C*	8 kg	1400 rpm	-/80 litres	0.90 kWh	135 min	5
P3 Heavy 90°C	8 kg	1400 rpm	9/75 litres	2.40 kWh	115 min	3
P4 Heavy 60°C	8 kg	1400 rpm	9/65 litres	1.20 kWh	100 min	3
P5 White 90°C	8 kg	1400 rpm	20/54 litres	1.40 kWh	105 min	3
P6 White / Colour 60°C	8 kg	1400 rpm	20/50 litres	0.35 kWh	75 min	3
P7 White / Colour 40°C	8 kg	1400 rpm	18/46 litres	0.30 kWh	55 min	3
P8 Super Quick wash 60°C	4 kg	800 rpm	16/35 litres	0.65 kWh	45 min	3
P9 Super Quick wash 40°C	4 kg	800 rpm	14/35 litres	0.40 kWh	30 min	3
P10 Synthetics 40°C	4 kg	600 rpm	7/45 litres	0.40 kWh	30 min	3
P11 Wool / Hand wash 30°C	3 kg	600 rpm	0/60 litres	0.40 kWh	35 min	3
P12 Rinse	4 kg	1400 rpm	0/20 litres	0.10 kWh	15 min	1
P13 MOP 60°C	8 kg	1400 rpm	20/40 litres	1.30 kWh	90 min	2
P14 MOP 90°C	8 kg	1400 rpm	20/35 litres	0.40 kWh	125 min	2
P15 Microfibre 60°C	8 kg	1400 rpm	18/40 litres	0.35 kWh	65 min	3
P16 Microfibre 40°C	8 kg	1400 rpm	16/40 litres	0.35 kWh	55 min	3
P17 Disinfection 1 40°C + 20 min	8 kg	1400 rpm	9/70 litres	0.75 kWh	95 min	3
P18 Disinfection 2 60°C + 20 min	8 kg	1400 rpm	9/70 litres	1.55 kWh	125 min	3
P19 Disinfection 3 90°C + 10 min	8 kg	1400 rpm	9/80 litres	2.70 kWh	150 min	3
P20 Allergy cotton 90°C	4.6 kg	1400 rpm	15/76 litres	2.05 kWh	170 min	5
P21 Allergy cotton 60°C	4.6 kg	1400 rpm	15/68 litres	1,50 kWh	155 min	5
P22 Allergy cotton 40°C	4.6 kg	1200 rpm	15/68 litres	1,25 kWh	145 min	5
P23 Allergy synthetics 60°C	2.3 kg	1200 rpm	10/65 litres	0,95 kWh	130 min	5
P24 Allergy program synthetics 40°C	2.3 kg	1200 rpm	10/65 litres	0,70 kWh	120 min	5
P25 Cleaning		1400 rpm	-/70 litres	0,42 kWh	100 min	3
P26 Program A		Service staff will be able to create customized programs via user interface.				
P27 Program B		Service staff will be able to create customized programs via user interface.				
P28 Program C		Service staff will be able to create customized programs via user interface.				

All values based on 8 kg test load and hot & cold water inlet. Water connections Cold = 15°C Hot = 55°C
* Test values according to European domestic standard EN60456 and a cold water inlet.

Washers

WMC84



WMC84 P / WMC84 V

Colour

Black panel & cover plate,
Stainless steel front & top, titanium sides
Door frame: Titanium/Metal

Performance

- Drum volume: 80 l
- Capacity: 8 kg
- Spin: 1400
- G-factor 530
- Heater effect: V1: 4400 W
V2: 7000 W

Display languages: 13

Features

- Induction motor
- Set up for external coin operation
- Set up for external auto dosing
- Set up for external booking system
- Hot & cold water connection

Installation

- Water connection: 3/4" + 1/2" adapter in EU
- Drain system: Pump / Valve
- Frequency: 50 Hz
- Electrical connection: V1: 400 V, 3-ph 10 A
V1: 230 V, 1-ph 16 A**
V2: 400 V, 3-ph 16 A

**also possible to be rewired to this connection



WMC84 P Marine

Colour

Black panel & cover plate,
Stainless steel front & top, titanium sides
Door frame: Titanium/Metal

Performance

- Drum volume: 80 l
- Capacity: 8 kg
- Spin: 1400
- G-factor 530
- Heater effect: 3000 W

Display languages: 13

Features

- Induction motor
- Set up for external auto dosing
- Hot & cold water connection

Installation

- Water connection: 3/4" + 1/2" adapter in EU
- Drain system: pump
- Frequency: 60 Hz
- Electrical connection: 230 V, 1-ph 16 A*

*without 0 potential

**also possible to be rewired to this connection



WMC84 P Coin op, One / Two slot

Colour

Black panel & cover plate,
Stainless steel front & top, titanium sides
Door frame: Titanium/Metal

Performance

- Drum volume: 80 l
- Capacity: 8 kg
- Spin: 1400
- G-factor 530
- Heater effect: V1: 4400 W

Display languages: 13

Features

- Induction motor
- Hot & cold water connection

Installation

- Water connection: 3/4" + 1/2" adapter in EU
- Drain system: Pump
- Frequency: 50 Hz
- Electrical connection: V1: 400 V, 3-ph 10 A
V1: 230 V, 1-ph 16 A**

**also possible to be rewired to this connection
(Allow 12 weeks for delivery)

Washers

WMC64



WMC64 P / WMC64 V

Colour
Black panel & cover plate,
Stainless steel front & top, titanium sides
Door frame: Titanium/Metal

- Performance**
- Drum volume: 60 l
 - Capacity: 6 kg
 - Spin: 1400
 - G-factor 530
 - Heater effect: V1: 3000 W
V2: 4400 W

Display languages: 13

- Features**
- Induction motor
 - Set up for external coin operation
 - Set up for external auto dosing
 - Set up for external booking system
 - Hot & cold water connection

- Installation**
- Water connection: 3/4"
 - Drain system: Pump / Valve
 - Frequency: 50 Hz
 - Electrical connection: V1: 230 V, 1-ph 16 A
V2: 400 V, 3-ph 10 A
V2: 230 V, 1-ph 16 A**

**also possible to be rewired to this connection



WMC64 P / WMC64 V Marine

Colour
Black panel & cover plate,
Stainless steel front & top, titanium sides
Door frame: Titanium/Metal

- Performance**
- Drum volume: 60 l
 - Capacity: 6 kg
 - Spin: 1400
 - G-factor 530
 - Heater effect: 3000 W

Display languages: 13

- Features**
- Induction motor
 - Set up for external auto dosing
 - Hot & cold water connection

- Installation**
- Water connection: 3/4"
 - Drain system: Pump / Valve
 - Frequency: 60 Hz
 - Electrical connection: V1: 230 V, 1-ph 16 A
V2: 400 V, 3-ph 16 A*
V3: 440 V, 3-ph 16 A*

*without 0 potential

**also possible to be rewired to this connection



Tumble dryers



Easy to use

All our professional tumble dryers have a robust easy to use LC display, Easy Control™ with a jog dial for program selection and a start/stop button. The display clearly shows the chosen program and remaining time and the program memory automatically remembers the last run

program including any settings, which means that for the next load all you need to do is to press start. As one of the quietest professional tumble dryers on the market it will also contribute to a good sound environment.



Auto programs

The auto programmes are not only convenient to use, they also save energy as the running time is adjusted according to the amount of laundry you load or how dry you want the load to be. Here are four good ways to dry your laundry:

- Auto extra dry
- Auto dry
- Auto normal dry
- Auto iron dry

Heat pump technology

For business areas where the tumble dryer runs constantly, the heat pump tumble dryer makes significant savings in electricity. Drying a 8 kg load takes about 1,5 kWh. Rated with A+++ in the EU.



Robust single motor system

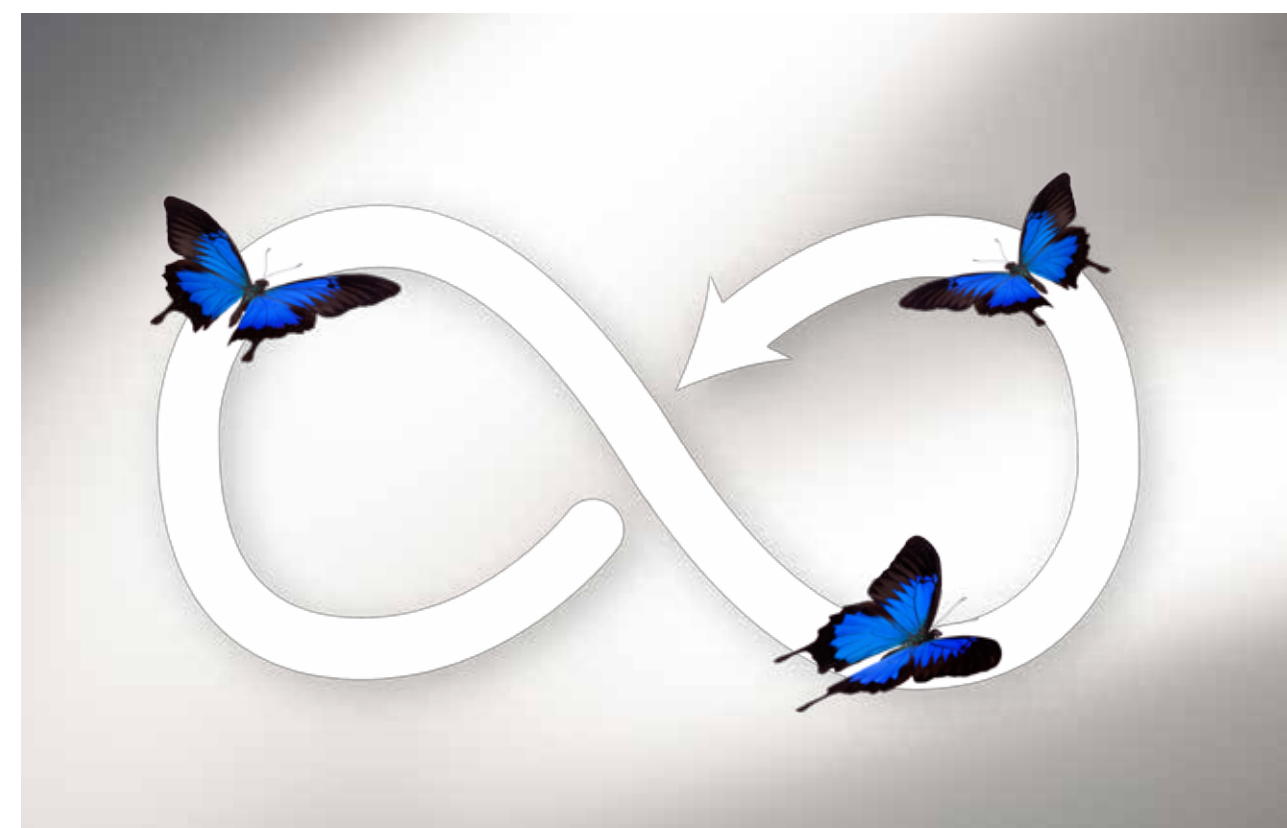
To ensure the belt runs precisely and the strain on adjacent components is minimised, we have a single motor system with a ball bearing belt idler in our dryers.



Sensi Dry™ - no more overdrying

Our unique and patented Sensi Dry™ system determines the length of drying time required. Interaction between temperature sensors makes the drying result more even and more reliable than that of a conventional type sensor (which gauges electrical resistance). When you choose

Auto dry you can decide how dry you want the load to be by simply choosing one of up to eight Auto programs. After that, our unique Sensi Dry™ system determines the length of drying time required. The program automatically stops when the clothes are dry.



Non-stop Butterfly Drying™

Other dryers use a "reversing" drying process, which means the dryer constantly changes direction. Our dryers tumble the laundry in a figure of an eight. Gently, non-stop and in only one direction, without the clothes bundling. This also saves both the belt and the motor, providing greater durability.

High wattage element

In some business areas you need to have working clothes washed and dried several times on a working day. In those cases speed is necessary. Then it's good to know that our professional dryers can be fitted with a 5000 W or 3000 W element giving you shortest possible drying times.



Double Lint Filter

Lint hinders the circulation inside the tumble dryer which leads to a higher energy consumption. This is why our dryers are fitted with a particularly efficient double filter and an automatic lint filter indicator that reminds you when it's time to clean it.

Tumble dryers

TDC145



TDC145 V

Colour

Black panel, Stainless steel door & top, Titanium sides

Performance

- Drum volume: 145 l
- Capacity: 8 kg
- Type: Vented
- Heater effect: 5000 W

Display languages: 13

Features

- Set up for external coin operation
- Set up for external booking system
- Fixed lint filter in door

Installation

- Frequency: 50 Hz
- Electrical connection: 400 V, 3-ph 16 A
230 V, 1-ph 16 A**

**change in user interface



TDC145 V Marine

Colour

Black panel, Stainless steel door & top, Titanium sides

Performance

- Drum volume: 145 l
- Capacity: 8 kg
- Type: Vented
- Heater effect: 3000 W

Display languages: 13

Features

- Set up for external coin operation
- Set up for external booking system
- Fixed lint filter in door

Installation

- Frequency: 60 Hz
- Electrical connection: 230 V, 1-ph 16 A



Tumble dryers

TDC112



TDC112 V

Colour
Black panel, Stainless steel door & top,
Titanium sides

- Performance**
- Drum volume: 112 l
 - Capacity: 6 kg
 - Type: Vented
 - Heater effect: 3000 W

Display languages: 13

- Features**
- Set up for external coin operation
 - Set up for external booking system
 - Fixed lint filter in door

- Installation**
- Frequency: 50 Hz
 - Electrical connection: 230 V, 1-ph 16 A



TDC112 V Marine

Colour
Black panel, Stainless steel door & top,
Titanium sides

- Performance**
- Drum volume: 112 l
 - Capacity: 6 kg
 - Type: Vented
 - Heater effect: 3000 W

Display languages: 13

- Features**
- Set up for external coin operation
 - Set up for external booking system
 - Fixed lint filter in door

- Installation**
- Frequency: V2: 50 Hz / V1 & V3: 60 Hz
 - Electrical connection: V1: 230 V, 1-ph 16 A
V2: 400 V, 3-ph 16 A*
V3: 440 V, 3-ph 16 A*

*without 0 potential



Accessories

All our professional models can be supplemented with a range of practical accessories to facilitate your work in the laundry area.



Accessories for washers & dryers



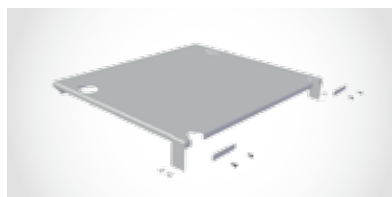
Plinth HPL530S
For washers/dryers WMC64
Stainless steel
SAP 441663



Plinth HPL830S
For washers/dryers WMC84
Stainless steel
SAP 445501



Marine fixing brackets
For all washers/dryers
Galvanised steel
SAP 187106



Marine Stacking Kit
For all washers/dryers stacks
Stainless steel
SAP 432234



Dishwashers



Professional performance

With a two level basket carrier system, program times down to five minutes and flexible programs the ASKO DWC5936 is capable of washing as much as 24 baskets in an hour. As with all our professional products you

can count on a durable acid proofed stainless steel construction and they also fulfil prevailing hygiene requirements where hygienic demands are set high.



Hot and cold water connection

The dishwasher can be connected to hot and/or cold water. It adjusts automatically to the connected water in order to achieve the best dishwashing result. To achieve optimal short dishwashing time, the dishwasher should be connected to hot water 65 °C.



Flexible dual crate baskets

The DWC5936 handles various types of dishwashing baskets on two levels at the size of 500 x 500 mm. You will easily fit 25 cm plates on both levels. If the upper basket is in its highest position there is room for 30.5 cm plates in the lower basket and removing the upper carrier makes it possible to load 56 cm high items.



Short program cycle - 5 min

Thanks to the efficient 6 kW element and the hot water connection (65 °C) you will get your dishes clean very fast, from five minutes.



Softener

All our professional dishwashers have a softener, which guarantees a perfect dishwashing result and retains function even in markets with hard water. Using the supplied test strip you test the water hardness and (via the display) set the amount of softener salt that needs to be used.



Variable pump pressure

You need high pressure when dishwashing a large beer glass, so it will be clean at the bottom, but low pressure when dishwashing a fine wine glass – so it does not fall over and break. That's why we have fitted our professional dishwashers with a circulation pump that can vary the pump pressure.



External auto dosing

The DWC5936 model is fitted with equipment for connection an external auto dosing pump system of two chemicals, detergent and rinse aid. The DWC5926 model is prepared for connection an external auto dosing pump system of two chemicals, detergent and rinse aid.* This makes it possible to use professional chemicals which in turn enables the dishwashers to perform at short cycle times.

* Connection kit for Model DWC5926 can be ordered as accessories or specified directly from factory before production.



Effective cleaning for all kind of loads

The DWC5926 is a dishwasher with professional performance but with the same stylish exterior as its domestic equivalent. With the DWC5926 we have combined good looks with high power output, short

program cycles, flexible basket system and extra durable construction in every detail.



Aqua Safe™

Our unique leak prevention solution is called Aqua Safe™. It's an advanced safety system with up to 14 control points that continuously monitors the machine for leaks and immediately stops the machine in the event of a potential leak.

47 dB (A)

Low noise

Excessive noise is a problem in many workplaces, and it's something we've thought of by giving our professional dishwashers extra good sound insulation and equipping them with silent drain and circulation pumps. With a noise level down to 47 dB(A) they are one of the market's quietest professional dishwashers.



Flexible programs

Restaurants, bars and cafés are examples of places where several different types of dishes with varying degrees of soiling are cleaned daily. That's when it's handy having different kinds of programs. In an ASKO you have all this, but also the opportunity to design your own programs to suit your needs even better.



Flexiracks™

We have designed every single basket to fit all possible kinds of loads. Fold down all the plate holders in the lower basket and you get a large flat area to put large bowls on. Place cups and ladles in the middle basket, or remove it to get extra space for baking pans. You get the roomiest dishwasher on the market, but also the smartest.



Turbo Drying Express+™

The DWC5926 is fitted with the unique Turbo Drying Express+™ system which blows warm air into the container and effectively evacuates moist air, enabling faster drying (which means shorter program times) and even dries plastic objects.



8 Steel™ + Acid proof container

There are few if any constructions as stable as those made of steel. Our dishwashers have 8 of the most important components made of high quality stainless steel: the container, the loading racks, the spray pipe, the spray arms, the outer base, the feet, the strainer and the heating element. In addition, our professional dishwashers have an extra durable acid-proofed container and door. Made of extra high grade quality steel.

Professional programs



When many different people use the same machine, user friendliness combined with flexibility in program choice is more important than ever. The user interface is located as a top panel. It is easy to use with only two buttons: a Program button and a Start button. If you just press start, the program used last time will be repeated.

Easy to read display

In the display you'll easily see program choice and remaining time. On the front you'll find an LC display which shows the remaining program time, or can be set to show the reached/current temperature during Sani programs.

Available programs

If you want to adjust the dishwasher to fit your specific business area, Service staff can adjust which programs are available in the menu. This to create a dishwasher that is perfectly suited to your needs.

Programs that fulfil hygiene demands

The professional dishwasher has two professional programs, Sani A 85°C and Sani B 85°C, which increase the temperature in the final rinse for use where hygienic demands are set high. Sani A increases the temperature to 85°C for five minutes in the final rinse and Sani B increases it to 85°C for ten minutes in the final rinse. A wash in 85°C kills the germs and bacteria in children's feeding bottles. For heat disinfection these programs meet the EN ISO15883 standard. The Swedish association of local authorities recommends that dishwashers in public environments should have a final rinse of 85°C to achieve hygiene standards.



Programs DWC5906

PROGRAM	DESCRIPTION	TEMPERATURE*	ENERGY (kWh) HOT / COLD	WATER (L)	TIME (min) HOT / COLD
Sani A	Programme for effectively cleaning particularly dirty dishes. The temperature of the main wash is 60°C. The final rinse is 85°C for 6 minutes.	60°C	1.3 / 1.9	14	80 / 95
Sani B	Programme for effectively cleaning particularly dirty dishes. The temperature of the main wash is 50°C. The final rinse is 80°C for 10 minutes.	50°C	1.3 / 1.9	10	40 / 60
Heavy	Programme for very dirty dishes, such as pans, casserole dishes and oven dishes. If these dishes do not completely fill the dishwasher, you can add plates and the like.	60°C	1.0 / 1.5	19	180 / 195
Normal	Use to wash normal dirty dishes, and even dishes with dried leftovers, including plates, serving dishes, cups, glasses and so on.	60°C	0.8 / 1.5	18	145 / 170
Daily	A programme suitable for day-to-day dishwashing. This programme can also clean dried leftovers, but is not intended for burnt food, such as on oven dishes.	60°C	0.7 / 1.3	13	130 / 145
Quick	This programme is used for glasses and porcelain that is slightly dirty, such as coffee cups.	30°C	0.1 / 0.2	10	20 / 20
Delicate	If the dishes are not very dirty, you can select Delicate wash. This programme is intended for glasses and porcelain that have just been used and as such do not require such a powerful programme.	40°C	0.5 / 0.9	15	95 / 110
Eco	Use when you want to save energy. For normal dirty dishes.	55°C	0.8 / 1.04	10.7	170 / 185
Rinse & Hold	Used to rinse dishes while you wait for the dishwasher to become fully loaded.	-	0.01 / 0.01	3	6 / 6

Values in table above have been tested with 65°C hot or 15°C cold water connection with a D5906 (XL) dishwasher

* Main wash / final rinse

Programs DWC5926

PROGRAM	DESCRIPTION	TEMPERATURE*	ENERGY (KWH) HOT / COLD	WATER (L)	TIME (MIN) HOT / COLD
Quick wash	This programme is used for glasses and porcelain that is slightly soiled, such as coffee cups.	60°C / 65°C	0.7 / 1,3	14	10 / 20
Universal	Standard progarm for normally soiled dishes.	60°C / 70°C	0.8 / 1.5	14	25 / 25
Universal plus	Cleaning of heavily soiled dishes where a major part of the soiling can be removed using cold water prewash.	65°C / 70°C	0.9 / 1,7	17	40 / 40
Intensive	A programme suitable for day-to-day dishwashing. This programme can also clean dried leftovers, but is not intended for burnt food, such as on oven dishes.	65°C / 70°C	1,0 / 2,1	22	60 / 60
Wine glasses	Delicate wash at low pressure. This programme is intended for glasses and porcelain that have just been used.	55°C / 50°C	0.4 / 1,0	14	20 / 20
Beer glasses	Adopted for more robust and thicker beer glasses. Cold water in final rinse.	55°C / -	0.4 / 0.7	14	15 / 20
Plastic	Program adapted for plastic items that can withstand dishwashing cycle. Also for porcelain and glasses.	60°C / 60°C	0.7 / 1,4	17	40 / 40
Pots & pans	Programme for very dirty dishes, such as pans, casserole dishes and oven dishes. If these dishes do not completely fill the dishwasher, you can add plates and the like.	70°C / 70°C	1,1 / 1.5	23	160 / 180
Normal	Use to wash normal dirty dishes, and even dishes with dried leftovers, including plates, serving dishes, cups, glasses and so on.	48°C / 46°C	0.9 / 0.9	20	131 / 146
Universal Sani	Programme for effectively cleaning particularly dirty dishes. The temper-ature of the main wash is 60°C. The final rinse is 85°C for 3 minutes.	60°C / 85°C	1,3 / 2,0	17	40 / 45
Quick wash Sani	Programme for effectively cleaning particularly dirty dishes. The temper-ature of the main wash is 60°C. The final rinse is 85°C for 3 minutes.	60°C / 85°C	1.2 / 1.9	14	20 / 30
Rinse	Used to rinse dishes while you wait for the dishwasher to become fully loaded.	- / -	0.01 / 0.01	5	3 / 3
Drain	Pumping out water, for example in the event of programmes being interrupted.	- / -	0.01 / 0.01	-	2 / 2

Values in table above have been tested with 65°C hot or 15°C cold water connection with a DWC5926 (XL) dishwasher

* Main wash / final rinse

Programs DWC5936

PROGRAM	DESCRIPTION	TEMPERATURE*	ENERGY (KWH) HOT / COLD	WATER (L)	TIME (MIN) HOT / COLD
Quick wash	This programme is used for glasses and porcelain that is slightly soiled, such as coffee cups.	60°C / 82°C	0,8 / 1.2	8	5 / 10
Quick wash universal	For normally soiled dishes. Used for glasses and porcelain and coffee cups.	60°C / 82°C	0,8 / 1.3	12	15 / 20
Universal	Standard program for normally soiled dishes.	60°C / 82°C	0.9 / 1.4	12	15 / 20
Universal plus	Cleaning of heavily soiled dishes where a major part of the soiling can be removed using cold water prewash.	60°C / 82°C	0.9 / 1,5	15	20 / 25
Intensive	A programme suitable for day-to-day dishwashing. This programme can also clean dried leftovers, but is not intended for burnt food, such as on oven dishes.	65°C / 82°C	1,2 / 2,0	18	60 / 60
Wine glasses	Delicate wash at low pressure. This programme is intended for glasses and porcelain that have just been used.	55°C / 50°C	0.3 / 0,8	12	15 / 15
Beer glasses	Adopted for more robust and thicker beer glasses. Cold water in final rinse.	55°C / -	0.3 / 0.5	12	10 / 15
Rinse	Used to rinse dishes while you wait for the dishwasher to become fully loaded.	- / -	0.01 / 0.01	5	2 / 2
Drain	Pumping out water, for example in the event of programmes being interrupted.	- / -	0.01 / 0.01	-	2 / 2
Program A	Programs which can be adapted for specific needs.	-	-	-	-
Program B	Programs which can be adapted for specific needs.	-	-	-	-
Program C	Programs which can be adapted for specific needs.	-	-	-	-

Values in table above have been tested with 65°C hot or 15°C cold water connection with a DWC5936 (XL) dishwasher

* Main wash / final rinse

Dishwashers

DWC5906



- DWC5906**
- Colour**
- Stainless Steel or White
- Performance**
- Shortest program time from 40 min connected to hot water 65°C
 - 14 place settings
 - 48 dB(A)
 - Heating effect: 2,04 kW
 - Number of programs: 9
- Type**
- Built in
 - Available in XL 82 cm
 - Freshwater system, max rinse temperature 85°C
 - Integrated softener
 - Dosing system for detergent and rinse aid in door

- Baskets - Flexiracks™**
- Premium height adjustable upper basket
 - Premium lower basket
 - Cutlery basket
- Installation**
- 230 V, 1-ph 16 A
 - Frequency: 50 Hz
 - Cold or Hot water up to 65°C

DWC5926



- DWC5926**
- Colour**
- Stainless Steel
- Performance**
- Shortest program time from 10 min connected to hot water 65°C
 - 14 place settings
 - 47 dB(A)
 - Heating effect: 5,8 kW
 - Number of programs: 13
 - Turbo Drying+™
 - Turbo Drying Express+™
- Type**
- Built in, Free Standing, Fully integrated
 - Available in XL 82 cm and XXL 86 cm
 - Freshwater system, max rinse temperature 85°C
 - Integrated softener
 - Set up for external auto dosing
 - Dosing system for detergent and rinse aid in door

- Baskets - Flexiracks™**
- Exclusive height adjustable upper basket
 - Exclusive lower basket
 - Cutlery basket
- Installation**
- 400 V, 3-ph 10 A
 - Frequency: 50 Hz
 - Cold or Hot water up to 65°C

Dishwashers

DWC5936



DWC5936

Colour

Stainless Steel

Performance

- Shortest program time from 5 min connected to hot water 65°C.
- 51 dB(A)
- Heating effect: 5,8 kW
- Number of programs: 9

Type

- Free Standing
- Available in XL 82 cm
- Freshwater system, max rinse temperature 85°C.
- Integrated softener
- External auto dosing system



Baskets - Flexiracks™

- Upper and lower carrier in stainless steel (basket is not included)

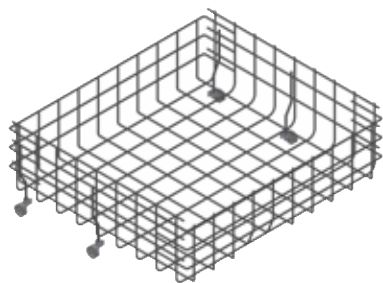
Installation

- 400 V, 3-ph 10 A
- Frequency: 50 Hz
- Cold or Hot water up to 65°C



Accessories

All our professional models can be supplemented with a range of practical accessories to facilitate your work in the kitchen area.



Accessories for dishwashers



Top & Sides for Freestanding placement incl. weights.

For all dishwashers, SAP White 441597, Stainless steel 441654, Titanium 441598



Pedestal

Pedestal recommended for 82 cm models, White or Titanium
SAP White 453571, Titanium 342091



Auto Dose Kit Prof.

SAP 477940



Extended Adjustable Feet

100-150 mm
Fits to D5926 and D5936
SAP 484935

WASHERS

BASICS

		WMC84 P	WMC84 V	WMC84 P Marine
Construction type (Built-in / Freestanding)		• / •	• / •	• / •
Type of installation (Half-integrated / Full-integrated / Built-under / Freestanding / N/A)		- / - / • / • / -	- / - / • / • / -	- / - / • / • / -
Type of control		Electronic	Electronic	Electronic
Type of control setting and signalling devices (Knob / Push button / LCD)		• / • / •	• / • / •	• / • / •
Microprocessor controlled		•	•	•
Door (Full cover door with window / Full cover door without window)		• / -	• / -	• / -
Stainless steel (inner /outer) drum / tank		• / •	• / •	• / •
Door hinge		Left	Left	Left
Alternative colours available		Stainless	Stainless	Stainless
Connection rating	W	3200 / 4600	3200 / 4600	3200
Current	A	16 / 10	16 / 10	16 / 10
Voltage	V	230 / 400	230 / 400	230 / 440
Frequency	Hz	50	50	60
Length of electrical supply cord	cm	210	210	210
Plug type		Schuko (230V)	Schuko (230V)	Schuko (230V)
Drain system		Pump	Valve	Pump
Adjustable feet		•	•	•
Certificates (CE / UL)		• / •	• / •	• / •

DIMENSIONS

Height of the product	mm	850	850	850
Width of the product	mm	595	595	595
Depth of the product	mm	700	700	700
Depth with open door 90 degree	mm	1067	1067	1067
Net weight (kg) (without door)	kg	92	92	92
Gross weight (kg) (without door)	kg	94	94	94

ENERGY CONSUMPTION

Energy consumption (P6. White/colour 60°C hot and cold water connection)	kWh/kg	0.037	0.037	0.037
Spin drying performance class		-	-	-
Maximum spin speed	rpm	1400	1400	1400
Capacity cotton	kg	8	8	8
Water consumption (P6. White/colour 60°C hot and cold water connection)	l	65	65	65
Noise level washing (dB(A) re 1 pW)	dB(A)	48	48	48
Noise level spinning (dB(A) re 1 pW)	dB(A)	70	70	70
Maximum draining capacity	l/s	0.4	1.5	0.4
G-factor (at max rpm)	G	530	530	530
Energy label		-	-	-

PROGRAMS

P1. Normal 60°C (Swan version 6 kg)	•	•	•
P2. Normal 40°C (Swan version 6 kg)	•	•	•
P3. Heavy 90°C	•	•	•
P4. Heavy 60°C	•	•	•
P5. White 90°C	•	•	•
P6. White/Colour 60°C	•	•	•
P7. White/Colour 40°C	•	•	•
P8. Quick 60°C	•	•	•
P9. Quick 40°C	•	•	•
P10. Synthetic 40°C	•	•	•
P11. Wool/ Hand 30°C	•	•	•
P12. Rinse	•	•	•
P13. MOP 60°C	•	•	•
P14. MOP 90°C	•	•	•
P15. Microfibre 60°C	•	•	•
P16. Microfibre 40°C	•	•	•
P17. Disinfection 40°C (20 min)	•	•	•
P18. Disinfection 60°C (20 min)	•	•	•
P19. Disinfection 90°C (10 min)	•	•	•
P20. Allergy cotton 90°C	•	•	•
P21. Allergy cotton 60°C	•	•	•
P22. Allergy cotton 40°C	•	•	•
P23. Allergy synthetics 60°C	•	•	•
P24. Allergy synthetics 40°C	•	•	•
P25. Drum cleaning	•	•	•
P26-28. Program A-C	•	•	•

FEATURES

Drum volume	l	80	80	80
Available languages display		13	13	13
Balance control		•	•	•
Water protection system		•	•	•
Progress indicator (LCD)		•	•	•
Digital countdown indicator		•	•	•
Porthole diameter	mm	310	310	310

Technical specifications

WASHERS		WMC64 P	WMC64 V	WMC64 P Marine	WMC64 V Marine
BASICS					
Construction type (Built-in / Freestanding)		• / •	• / •	• / •	• / •
Type of installation (Half-integrated / Full-integrated / Built-under / Freestanding / N/A)		- / - / • / • / -	- / - / • / • / -	- / - / • / • / -	- / - / • / • / -
Type of control		Electronic	Electronic	Electronic	Electronic
Type of control setting and signalling devices (Knob / Push button / LCD)		• / • / •	• / • / •	• / • / •	• / • / •
Microprocessor controlled		•	•	•	•
Door (Full cover door with window / Full cover door without window)		• / -	• / -	• / -	• / -
Stainless steel (inner /outer) drum / tank		• / •	• / •	• / •	• / •
Door hinge		Left	Left	Left	Left
Alternative colours available		Stainless	Stainless	Stainless	Stainless
Connection rating	W	3200	3200	3200	3200
Current	A	16 / 10	16 / 10	16 / 10	16 / 10
Voltage	V	230 / 400	230 / 400	230 / 440	230 / 440
Frequency	Hz	50	50	60	60
Length of electrical supply cord	cm	210	210	210	210
Plug type		Schuko (230V)	Schuko (230V)	Schuko (230V)	Schuko (230V)
Drain system		Pump	Valve	Pump	Valve
Adjustable feet		•	•	•	•
Certificates (CE / UL)		• / •	• / •	• / •	• / •
DIMENSIONS					
Height of the product	mm	850	850	850	850
Width of the product	mm	595	595	595	595
Depth of the product	mm	585	585	585	585
Depth with open door 90 degree	mm	927	927	927	927
Net weight (kg) (without door)	kg	76	76	76	76
Gross weight (kg) (without door)	kg	78	78	78	78
ENERGY CONSUMPTION					
Energy consumption (P6. White/colour 60°C hot and cold water connection)	kWh/kg	0.037	0.037	0.037	0.037
Spin drying performance class		-	-	-	-
Maximum spin speed	rpm	1400	1400	1400	1400
Capacity cotton	kg	6	6	6	6
Water consumption (P6. White/colour 60°C hot and cold water connection)	l	65	65	65	65
Noise level washing (dB(A) re 1 pW)	dB(A)	48	48	48	48
Noise level spinning (dB(A) re 1 pW)	dB(A)	70	70	70	70
Maximum draining capacity	l/s	0.4	1.5	0.4	0.4
G-factor (at max rpm)	G	530	530	530	530
Energy label		-	-	-	-
PROGRAMS					
P1. Normal 60°C (Swan version 6 kg)		•	•	•	•
P2. Normal 40°C (Swan version 6 kg)		•	•	•	•
P3. Heavy 90°C		•	•	•	•
P4. Heavy 60°C		•	•	•	•
P5. White 90°C		•	•	•	•
P6. White/Colour 60°C		•	•	•	•
P7. White/Colour 40°C		•	•	•	•
P8. Quick 60°C		•	•	•	•
P9. Quick 40°C		•	•	•	•
P10. Synthetic 40°C		•	•	•	•
P11. Wool/ Hand 30°C		•	•	•	•
P12. Rinse		•	•	•	•
P13. MOP 60°C		•	•	•	•
P14. MOP 90°C		•	•	•	•
P15. Microfibre 60°C		•	•	•	•
P16. Microfibre 40°C		•	•	•	•
P17. Disinfection 40°C (20 min)		•	•	•	•
P18. Disinfection 60°C (20 min)		•	•	•	•
P19. Disinfection 90°C (10 min)		•	•	•	•
P22. Allergy cotton 90°C		•	•	•	•
P21. Allergy cotton 60°C		•	•	•	•
P22. Allergy cotton 40°C		•	•	•	•
P23. Allergy synthetics 60°C		•	•	•	•
P24. Allergy synthetics 40°C		•	•	•	•
P25. Drum cleaning		•	•	•	•
P26-28. Program A-C		•	•	•	•
FEATURES					
Drum volume	l	60	60	60	60
Available languages display		13	13	13	13
Balance control		•	•	•	•
Water protection system		•	•	•	•
Progress indicator (LCD)		•	•	•	•
Digital countdown indicator		•	•	•	•
Porthole diameter	mm	310	310	310	310

1) On a scale from G (least efficient) to A (most efficient).

DRYERS		TDC145 V	TDC145 V Marine
BASICS			
Construction type (Built-in / Freestanding)		• / •	• / •
Type of installation (Half-integrated / Full-integrated / Built-under / Freestanding / N/A)		- / - / • / • / -	- / - / • / • / -
Type of control		Electronic	Electronic
Type of control setting and signalling devices (Knob / Push button / LCD)		• / • / •	• / • / •
Microprocessor controlled		•	•
Cover door / double door		• / -	• / -
Door (Full cover door with window / Full cover door without window)		- / •	- / •
Door hinge (may be re-hung)		Right	Right
Alternative colours available		Stainless	Stainless
Heater type		Electric	Electric
Connection rating	W	5000	3000
Current	A	16	16
Voltage	V	400	230
Frequency	Hz	50	60
Length of electrical supply cord	cm	210	210
Plug type		Schuko (230V)	Schuko (230V)
Adjustable feet		•	•
DIMENSIONS			
Height of the product	mm	850	850
Width of the product	mm	595	595
Depth of the product	mm	745	745
Depth with open door 90 degree	mm	1305	1305
Net weight	kg	45	45
Gross weight	kg	47	47
ENERGY CONSUMPTION			
Energy consumption kWh cotton normal dry 60% moisture	kWh	4.74	4.83
Energy consumption kWh cotton normal dry 50% moisture	kWh	4.01	4.05
Capacity cotton (max)	kg	8	8
Dryer type		Vented	Vented
Noise level (dB(A) re 1 pW)	dB(A)	66	66
Average drying time cotton normal dry 60% moisture, 16A	min	57	95
Average drying time cotton normal dry 50% moisture, 16A	min	54	82
Energy label		-	-
PROGRAMS			
Auto extra dry		•	•
Auto dry		•	•
Auto normal dry		•	•
Auto iron dry		•	•
Auto extra dry low temp		•	•
Auto dry low temp		•	•
Auto normal dry low temp		•	•
FEATURES			
Available languages display	No	13	13
Automatic programs		•	•
Buzzer		•	•
Vent hose length	cm	300	300
Exhaust water pipe	cm	-	-
Maximum duct length (straight)	cm	1800	1800
Duct length reduction per 45° elbow	cm	150	150
Duct length reduction per 90° elbow	cm	300	300
Air outlet Ø	mm	100	100
Airing capacity	m³/h	134/-	154/-
Maximum back pressure	Pa	98	114
Drum volume	l	145	145
Digital countdown indicator		•	•
Blocked filter indicator		-	-
Full tank indicator		-	-
Self cleaning condensor filter		-	-

Technical specifications

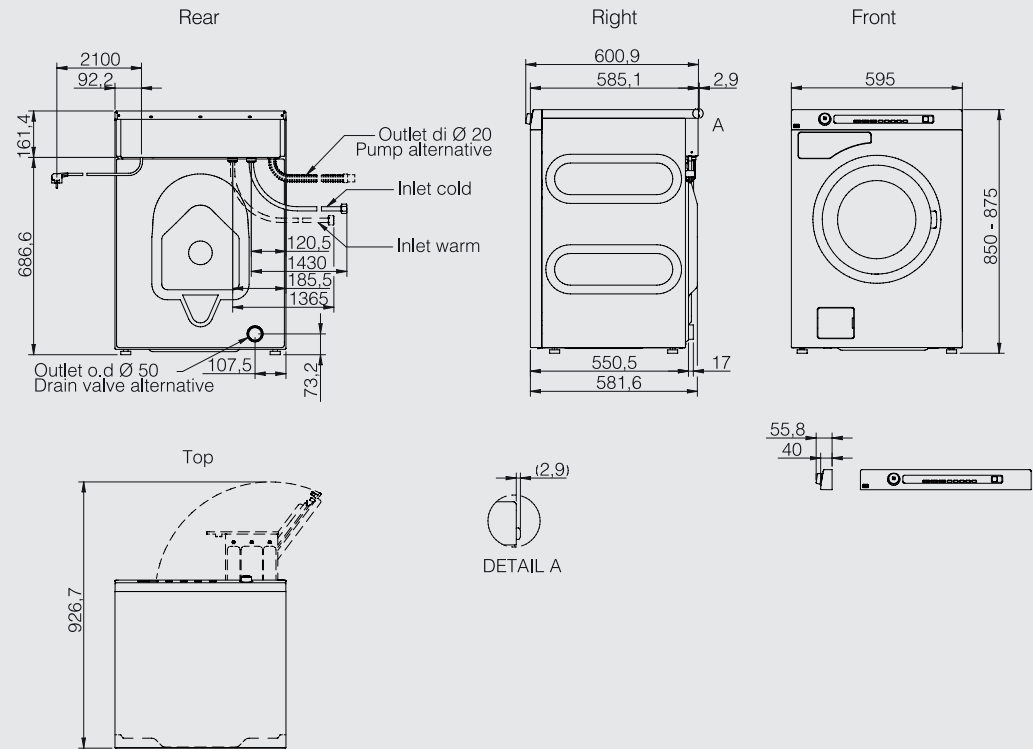
DRYERS		TDC112 V	TDC112 V Marine
BASICS			
Construction type (Built-in / Freestanding)		• / •	• / •
Type of installation (Half-integrated / Full-integrated / Built-under / Freestanding / N/A)		- / - / • / • / -	- / - / • / • / -
Type of control		Electronic	Electronic
Type of control setting and signalling devices (Knob / Push button / LCD)		• / • / •	• / • / •
Microprocessor controlled		•	•
Cover door / double door		• / -	• / -
Door (Full cover door with window / Full cover door without window)		- / •	- / •
Door hinge (may be re-hung)		Right	Right
Alternative colours available		Stainless	Stainless
Heater type		Electric	Electric
Connection rating	W	3300	3300
Current	A	16 / 10	16 / 10
Voltage	V	230 / 400	230 / 440
Frequency	Hz	50	60
Length of electrical supply cord	cm	210	210
Plug type		Schuko (230V)	Schuko (230V)
Adjustable feet		•	•
DIMENSIONS			
Height of the product	mm	845	845
Width of the product	mm	595	595
Depth of the product	mm	585	585
Depth with open door 90 degree	mm	1165	1165
Net weight	kg	40	40
Gross weight	kg	42	42
ENERGY CONSUMPTION			
Energy consumption kWh cotton normal dry 60% moisture	kWh	4.07	4.07
Energy consumption kWh cotton normal dry 50% moisture	kWh	3.40	3.40
Capacity cotton (max)	kg	7	7
Dryer type		Vented	Vented
Noise level (dB(A) re 1 pW)	dB(A)	66	66
Average drying time cotton normal dry 60% moisture, 16A	min	88	88
Average drying time cotton normal dry 50% moisture, 16A	min	74	74
Energy label		-	-
PROGRAMS			
Auto extra dry		•	•
Auto dry		•	•
Auto normal dry		•	•
Auto iron dry		•	•
Auto extra dry low temp		•	•
Auto dry low temp		•	•
Auto normal dry low temp		•	•
FEATURES			
Available languages display	No	13	13
Automatic programs		•	•
Buzzer		•	•
Vent hose length	cm	300	300
Exhaust water pipe	cm	-	-
Maximum duct length (straight)	cm	1800	1800
Duct length reduction per 45° elbow	cm	150	150
Duct length reduction per 90° elbow	cm	300	300
Air outlet Ø	mm	100	100
Airing capacity	m³/h	134/-	154/-
Maximum back pressure	Pa	98	114
Drum volume	l	112	112
Digital countdown indicator		•	•
Blocked filter indicator		-	-
Full tank indicator		-	-
Self cleaning condensor filter		-	-



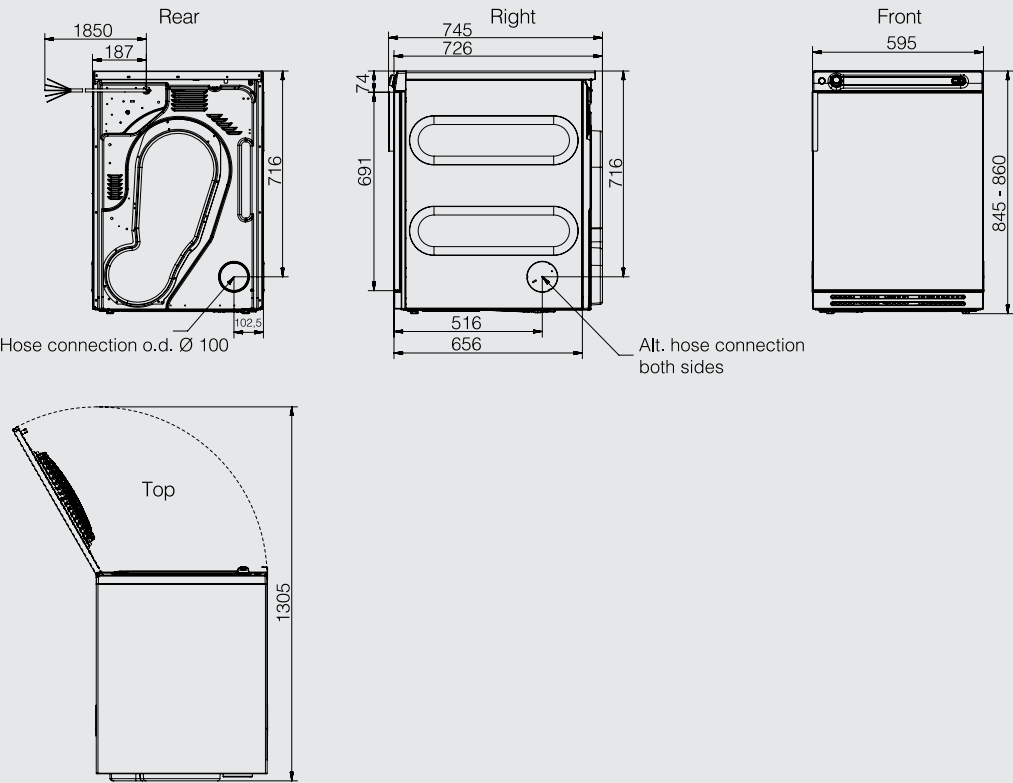
DISHWASHERS		DWC5906	DWC5926	DWC5936
BASIC				
Construction type (Built-in / Fully integrated / Freestanding)		• / - / -	• / • / •	- / - / •
Size		XL	XL/XXL	XL
Maximum power input	W	2140	5800	5800
Fuse rating	A	10	10	10
Voltage	V	220-240	400	400
Frequency	Hz	50	50	50
Length of the cable	cm	182	182	182
Length of water inlet hose	cm	168	168	168
Length of outlet hose	cm	200	200	200
Required inlet water pressure	Mpa	0.03 - 1	0.03 - 1	0.03 - 1
DIMENSIONS				
Height	mm	820	820 / 850/ 860	850
Height with sides and worktop	mm	850	850 / 890	850
Width	mm	596	596	600
Depth	mm	550	550	596
Depth with door open	mm	1198	1198 / 1238	1198
Dimensions packed (H / W / D)	mm	890 / 640 / 680	890/930 / 640 / 680	975 / 640 / 680
Possible to adjust the feet to level the dishwasher		•	•	•
Min - max range of height possibilities	mm	820-870	820-870 / 860-910	860-910
Weight net	kg	52	53.6	73
Weight gross	kg	54	55.6	78
ENERGY LABEL INFORMATION / PERFORMANCE				
Program used for energy label declaration		ECO	ECO	N/A
Energy efficiency class		A+	TBD	N/A
Energy consumption	kWh	1.04	TBD	N/A
Cleaning performance class		A	TBD	N/A
Drying performance class		C	TBD	N/A
Standard place settings, tested		13 EU	TBD	N/A
Water consumption	l (G in USA)	10.7	TBD	N/A
Estimated annual water consumption, 280 full loads	l	2 990	TBD	N/A
Estimated annual energy consumption, 280 full loads	kWh	295	TBD	N/A
Noise level	dB(A) re pW	48	47	51
PROGRAMS				
Daily		•	-	-
Heavy		•	-	-
Normal		•	•	-
Delicate		•	-	-
Quick		•	-	-
Eco		•	-	-
Rinse and hold		•	-	-
Sani A		•	-	-
Sani B		•	-	-
Quick Wash		-	•	•
Quick Wash Universal		-	-	•
Universal		-	•	•
Universal Plus		-	•	•
Intensive		-	•	•
Wine Glasses		-	•	•
Beer Glasses		-	•	•
Plastic		-	•	-
Pots & Pans		-	•	-
Universal Sani		-	•	-
Quick Wash Sani		-	•	-
Rinse		-	•	•
Drain		-	•	•
Program A		-	-	•
Program B		-	-	•
Program C		-	-	•

DISHWASHERS		DWC5906	DWC5926	DWC5936
FEATURES				
Number of programs		9--	13	9
Number of temperatures possible to select		6	6	6
Drying system		Condense	Fan	-
Type of program process indicator		Time countdown	Time countdown	Time countdown
Countdown indicator		•	•	•
Type of end of cycle indicator		Display indication (end) & signal	Display indication (end)& signal	Display indication (end)& signal
Rinse light indicator	Yes/No	•	•	-
Child safety device	Yes/No	-	•	•
Diameter of the largest loadable dish, upper rack	cm	23	23	23
Diameter of the largest loadable dish, lower rack	cm	31	39	39
Type of handles on racks		Plastic	Plastic	-

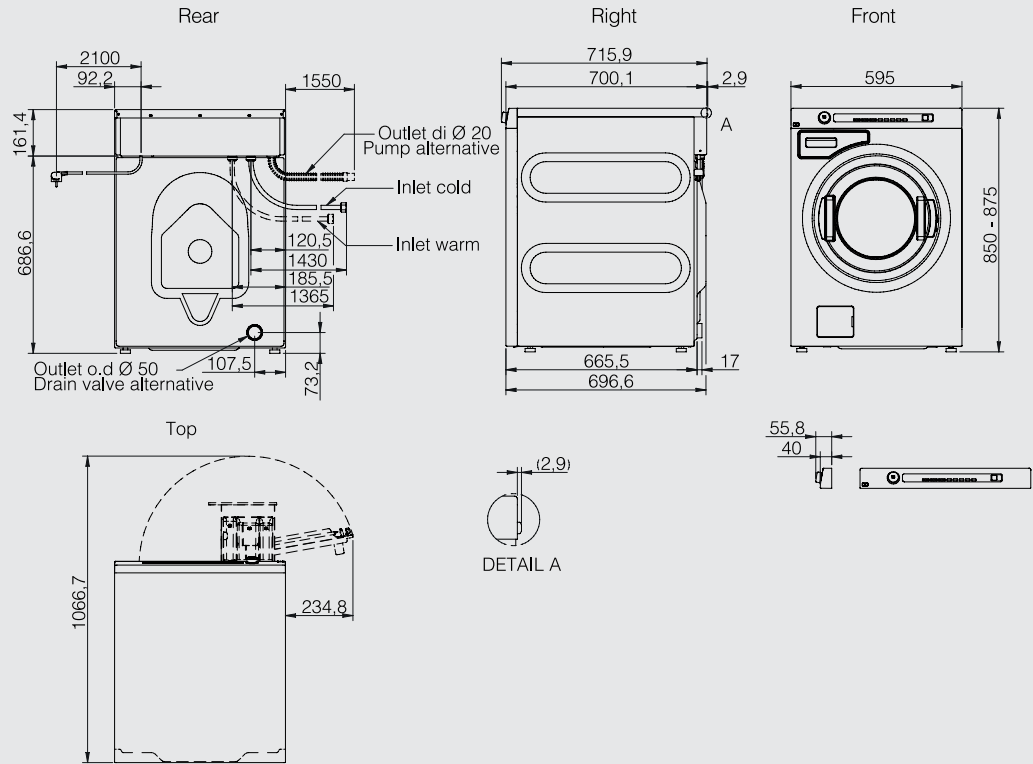
Washer WMC64



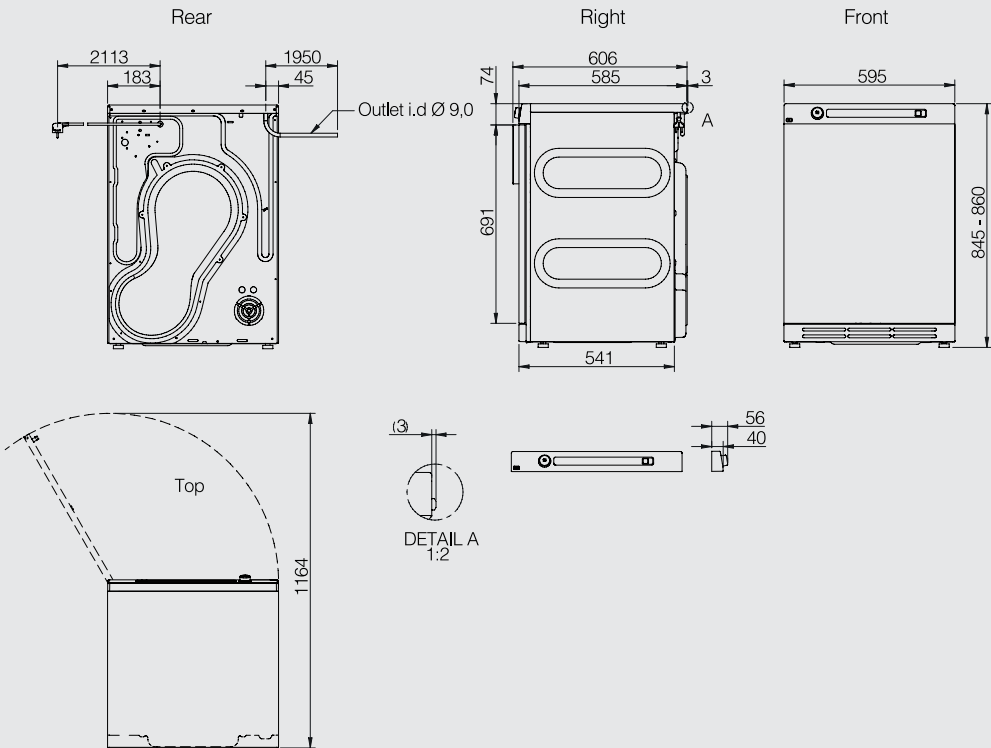
TDC145 V
TDC145 V Marine



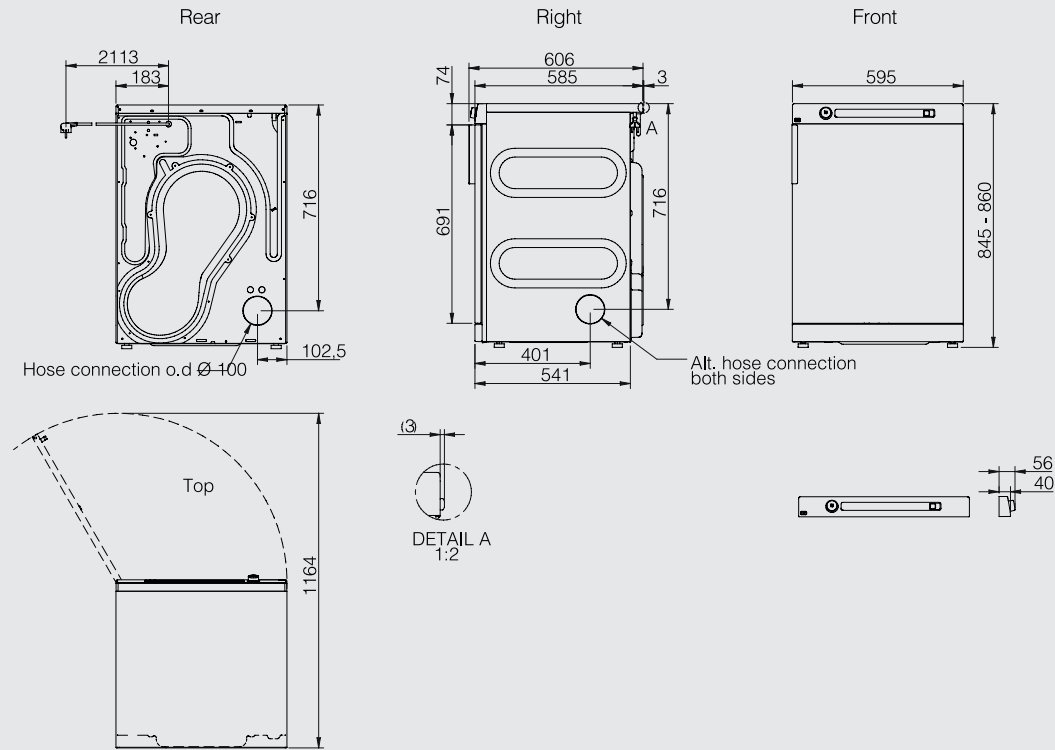
Washer WMC84



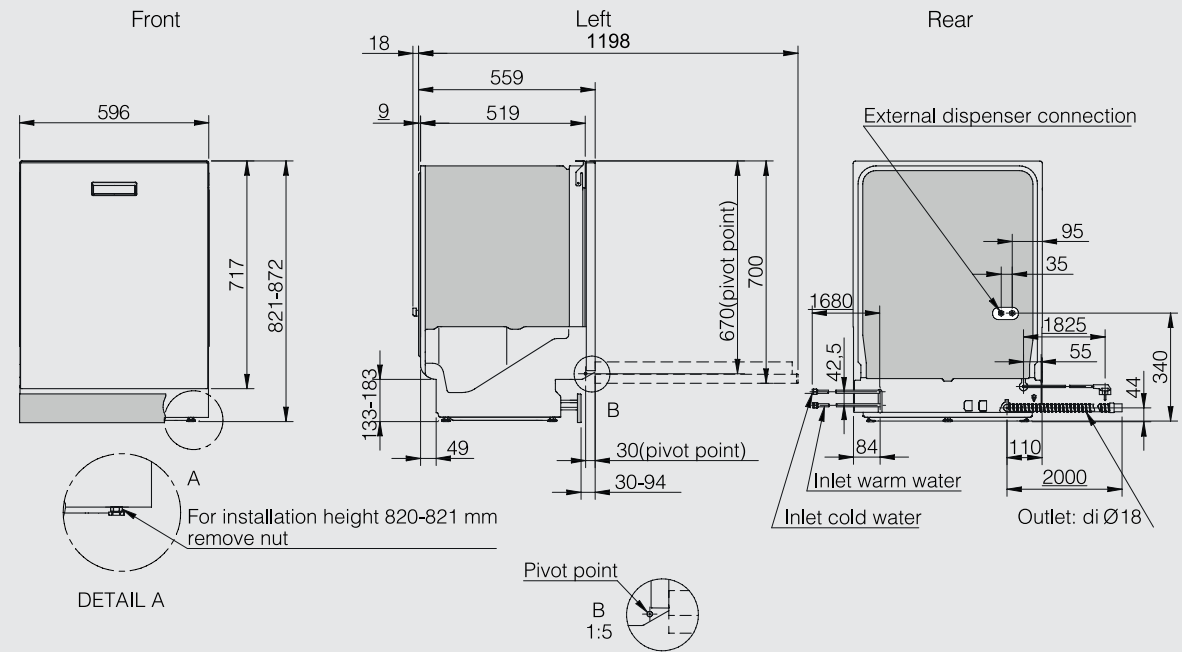
TDC112 C



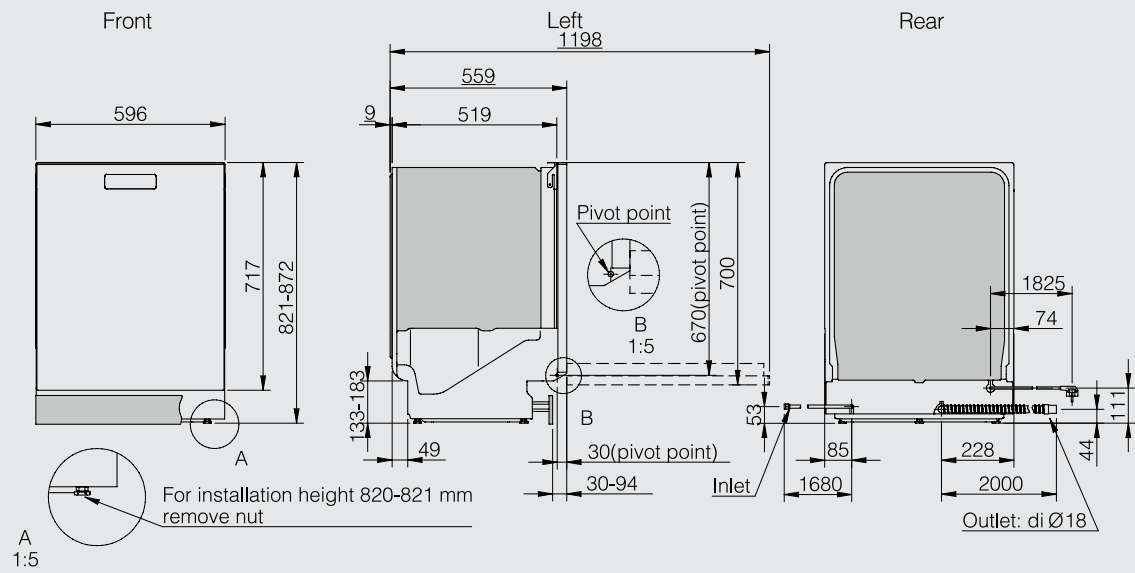
TDC112 V
TDC112 V Marine



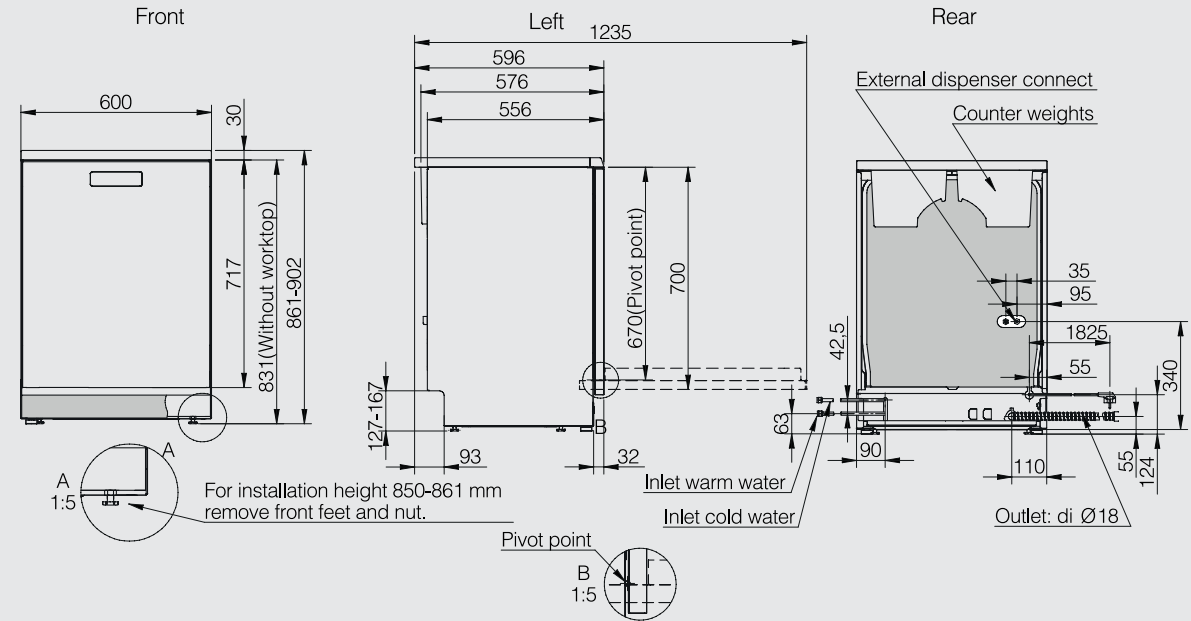
DWC5926 XL



DWC5906



DWC5936





Phone ASKO on 1300 00 2756
or visit www.asko.com.au for more information

National office • 35 Sunmore Close • MOORABBIN VIC 3189

ASKO reserves the right to change specifications and pricing without prior notice.



This publication is produced using FSC Mixed Source Chain of Custody (CoC) paper, made Elemental Chlorine Free (ECF) in a facility with an ISO 14001 Environmental Management System accreditation.